

For Reference Mark Tabulation See Sheet 12

Original information compiled from SP216885, SP300782 in the Department of Resources.

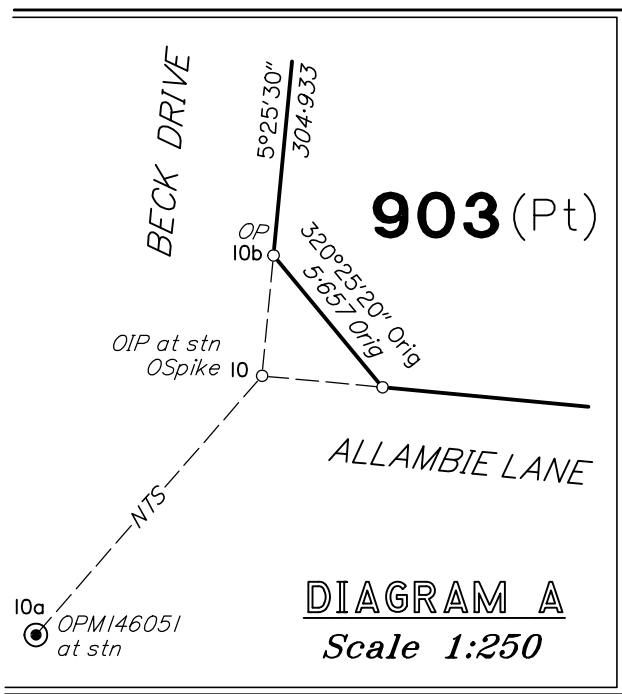
Peg placed at all new corners, unless otherwise stated.



Area of New Road

BLUEWATTLE BOULEVARD (-----) 6206 m ²
ROAD 01 (-----) 494 m ²
ROAD 01 (-----) 1044 m ²
ROAD 02 (-----) 4977 m ²
ROAD 03 (-----) 3939 m ²
Total Area 1.666 ha

903 (Pt)
38.41 ha
Total Area
(55.12 ha)



1-40, 58-68 & Emts AA-HH & JJ
SEE DIAG K SHEET 7

PRELIMINARY

0m 300m 600m 900m
0 50mm 100mm 150mm State copyright reserved.

Plan of Lots 1-40, 58-68, 903, 1000 and Emt AA in Lot 10, Emt BB in Lot 11, Emt CC in Lot 18, Emt DD in Lot 19, Emt EE in Lot 34, Emt FF in Lot 35 and Emts GG, HH, JJ-MM in Lot 903

Cancelling Lot 903 on SP300782

LOCAL TOWNSVILLE CITY
GOVERNMENT: COUNCIL LOCALITY: RASMUSSEN

Meridian: MGA (Zone 55) vide SP280592

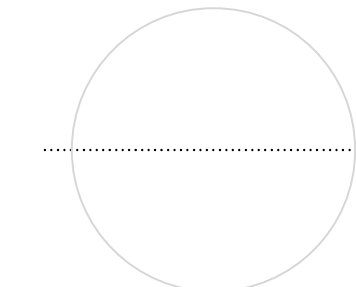
Survey Records: No

Scale: 1:6000

Format: STANDARD

SP344615
SP344615

Director
Date



WARNING : Folded or Mutilated Plans will not be accepted.
Plans may be rolled.
Information may not be placed in the outer margins.

(Dealing No.)

4. Lodged by

(Include address, phone number, email, reference, and Lodger Code)

I. Existing		Created		
Title Reference	Description	New Lots	Road	Secondary Interests
51161532	Lot 903 on SP300782	1-40, 58-68, 903 & 1000	New Rd	AA-HH & JJ-MM

MORTGAGE ALLOCATIONS

Mortgage	Lots Fully Encumbered	Lots Partially Encumbered
721808043	1-40, 58-68, 903 & 1000	_____

PRELIMINARY

BENEFIT EASEMENT ALLOCATIONS

Easement	Lots Fully Benefited	Lots Partially Benefited
717104793 (Emt K on SP280588)	1-40, 58-68, 903 & 1000	_____
717104795 (Emt L on SP280588)	1-40, 58-68, 903 & 1000	_____
717104799 (Emt M on SP280588)	1-40, 58-68, 903 & 1000	_____
717104802 (Emt N on SP280588)	1-40, 58-68, 903 & 1000	_____
717104804 (Emt P on SP280588)	1-40, 58-68, 903 & 1000	_____
717104809 (Emt Q on SP280588)	1-40, 58-68, 903 & 1000	_____

ENCUMBRANCE EASEMENT ALLOCATIONS

Easement	Lots to be Encumbered
601382792 (Emt E on RP854052)	5, 23, 24, 34-39, 903 & 1000
601086955 (Emt B on RP853741)	903
700349091 (Emt G on RP885656)	903
712360729 (Emt J on SPI84185)	903
715370955 (Emt X on SP257331)	903
716412542 (Emt W on SP273474)	903
717104812 (Emt R on SP280588)	903
717104821 (Emt T on SP280588)	903
719249868 (Emt U on SP306200)	903
715370956 (Emt Y on SP257331)	903

PRELIMINARY

6. Building Format Plans only.
I certify that:
* As far as it is practical to determine, no part of the building shown on this plan encroaches onto adjoining lots or road;
* Part of the building shown on this plan encroaches onto adjoining * lots and road
.....
Cadastral Surveyor/Director* Date
*delete words not required

7. Lodgement Fees :

Survey Deposit	\$
Lodgement	\$
.....New Titles	\$
Photocopy	\$
Postage	\$
TOTAL	\$

903 1-40, 58-68 & 1000	Pors 113, 117, 149 & 389 Por 117
Lots	Orig

2. Orig Grant Allocation :

3. References :
Dept File :
Local Govt :
Surveyor : 43126/017-01 - 13126_005A.dwg - WCHO - 12/2023 - V0

5. Passed & Endorsed :

By : BRAZIER MOTTI PTY LTD
Date :
Signed :
Designation : Liaison Officer

8. Insert Plan Number **SP344615**

ADDITIONAL SHEET

PRELIMINARY

903 (Pt)
SEE SHEET 1

903 (Pt)
SEE SHEET 1

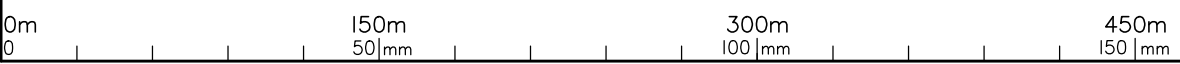
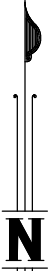
903 (Pt)
SEE SHEET 1

903 (Pt)
SEE SHEET 1

DIAGRAM B
Scale 1:3000

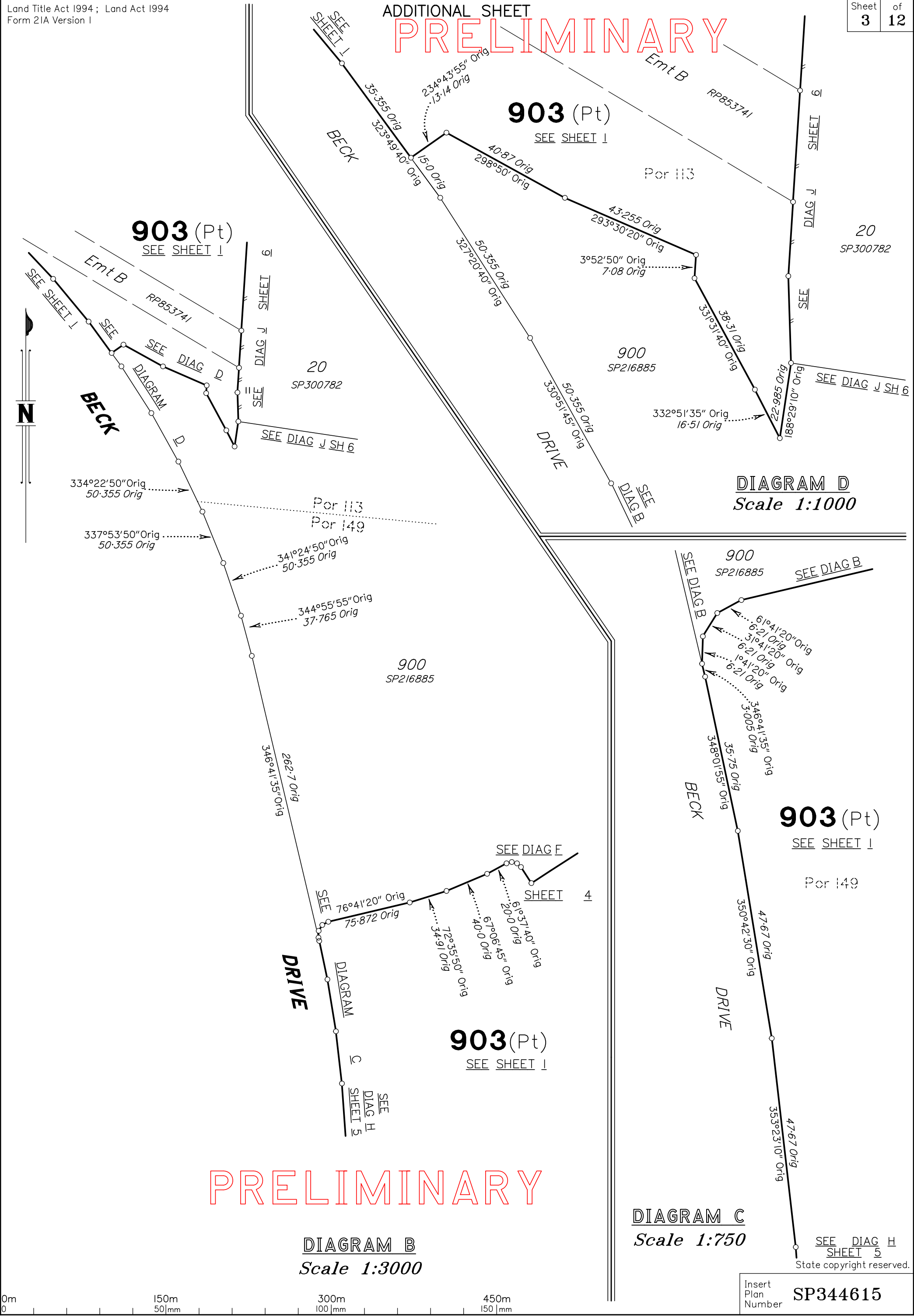
DIAGRAM D
Scale 1:1000

DIAGRAM C
Scale 1:750

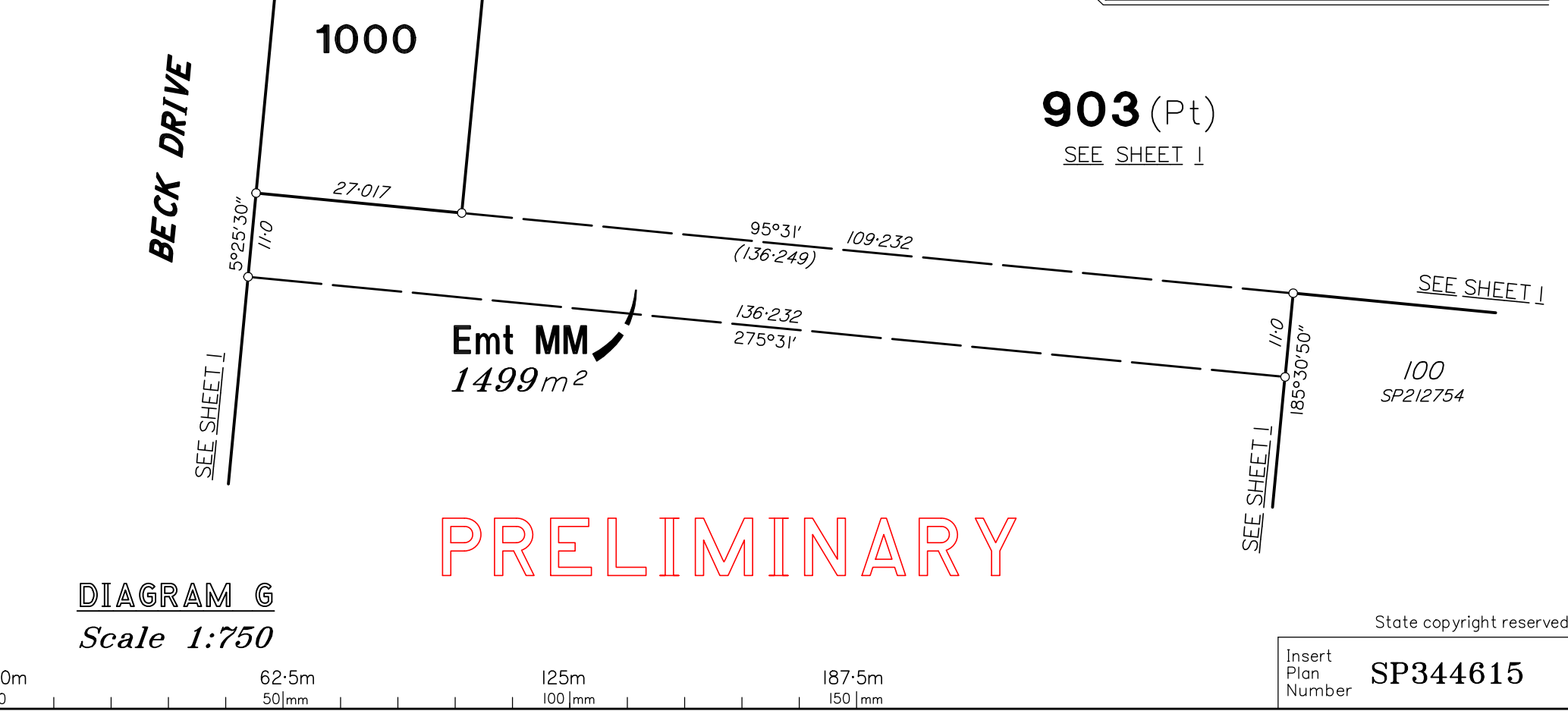
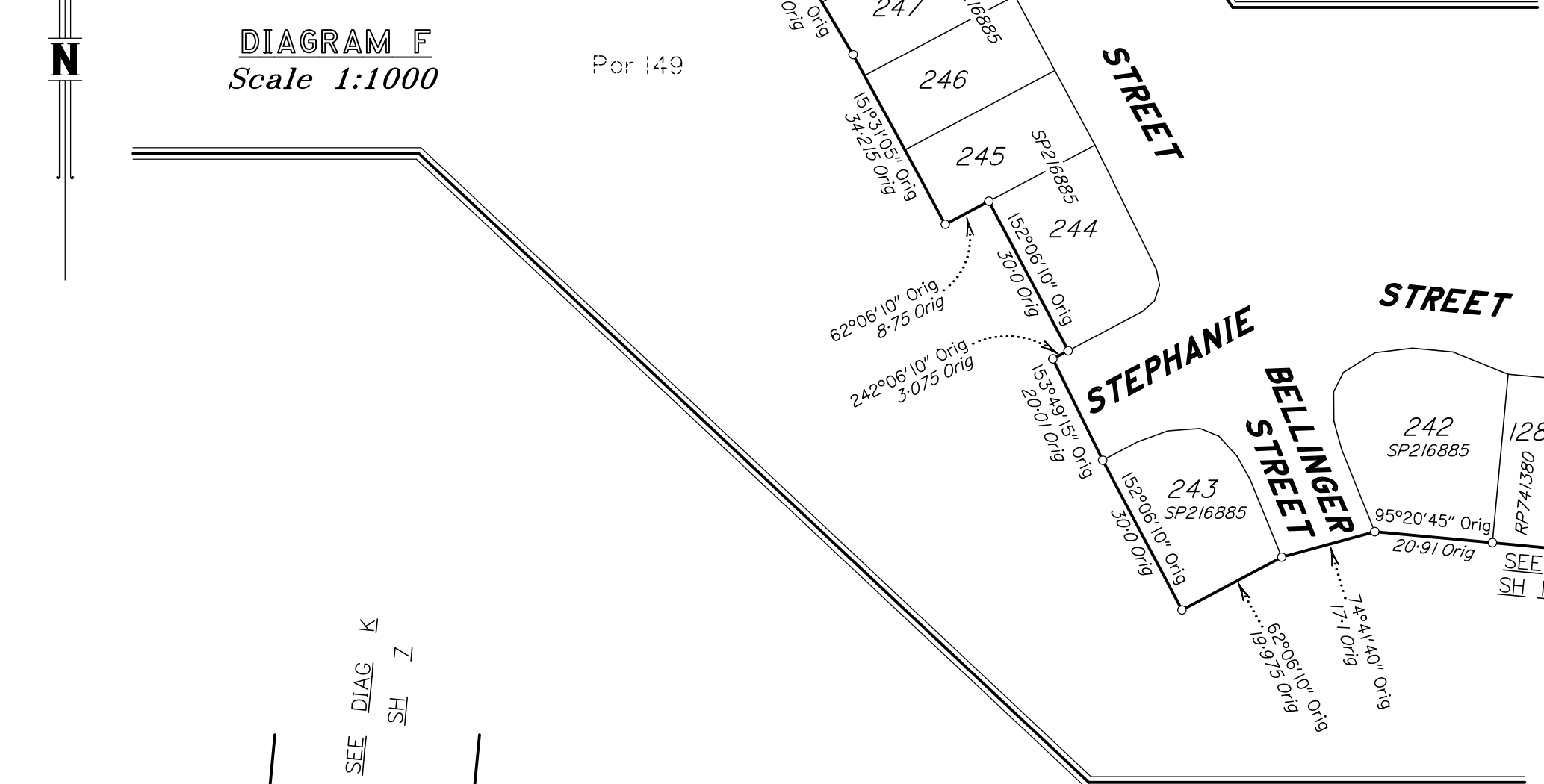
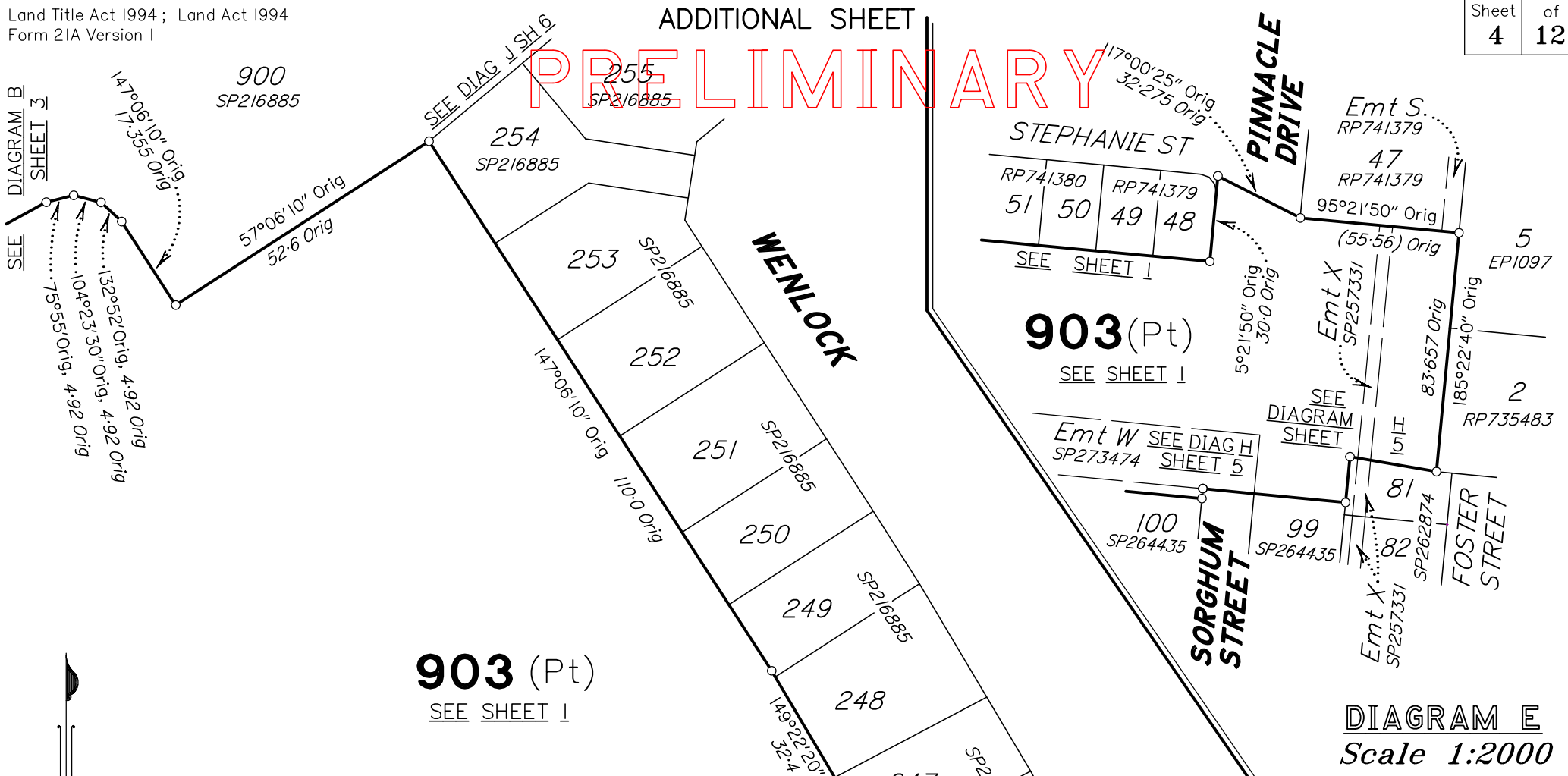


Insert Plan Number **SP344615**

State copyright reserved.



PRELIMINARY



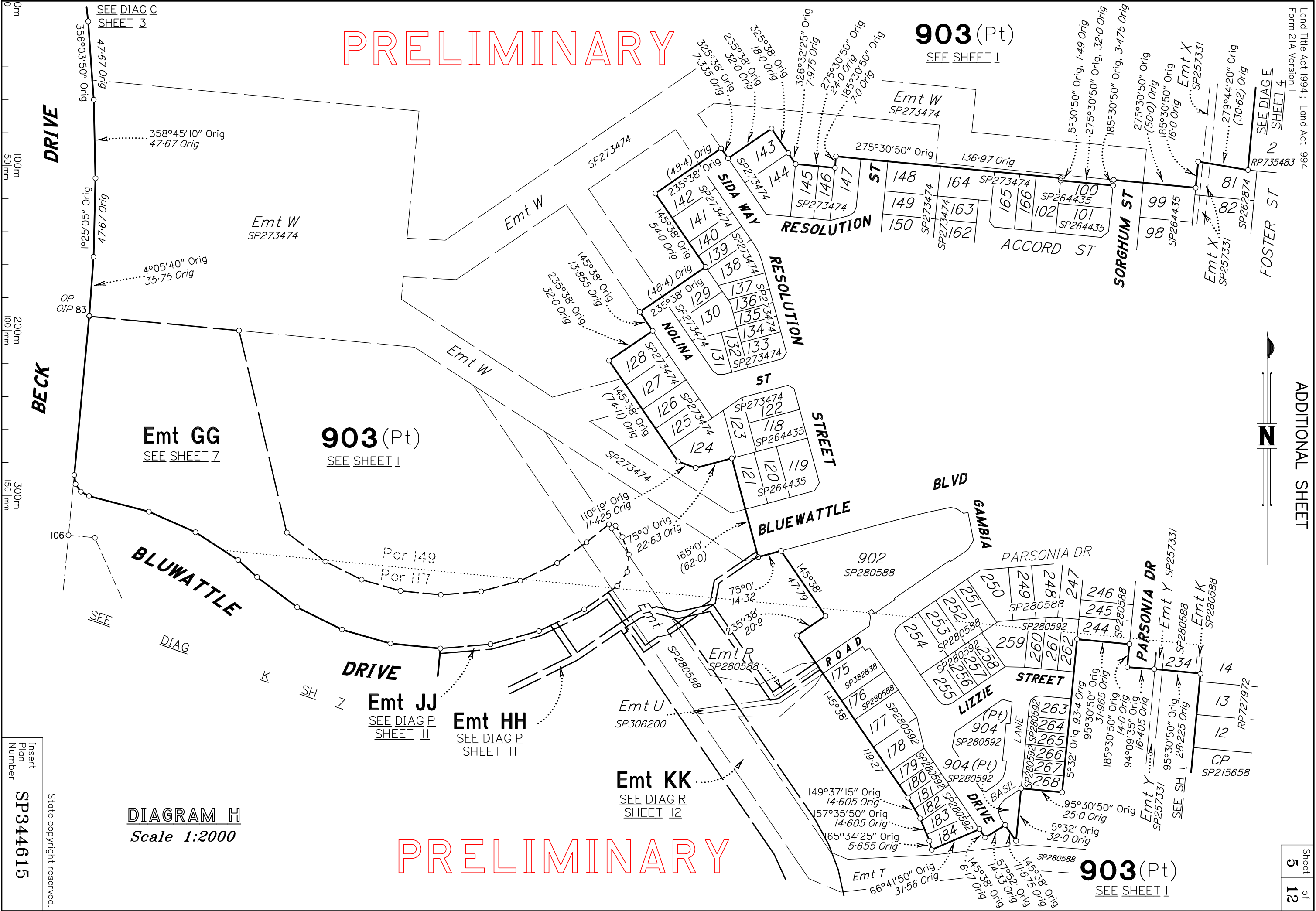
PRELIMINARY

903 (Pt)
SEE SHEET I

Land Title Act 1994 : Land Act 1994
Form 21A Version 1

ADDITIONAL SHEET

Sheet
5
of
12



Emt GG
SEE SHEET 7

903 (Pt)
SEE SHEET I

Emt JJ
SEE DIAG P
SHEET 11

Emt HH
SEE DIAG P
SHEET 11

Emt KK
SEE DIAG R
SHEET 12

903 (Pt)
SEE SHEET I

DIAGRAM H
Scale 1:2000

Insert
Plan
Number
SP344615

State copyright reserved.

0m
100m
200m
300m
50mm
100mm
150mm

SEE DIAG E
SHEET 4

N

SEE SH I
SHEET 11

SEE SHEET 1

SEE SHEET 1

SEE SHEET 1

SEE SHEET 1

SEE SHEET 1

SEE SHEET 1

SEE SHEET 1

SEE SHEET 1

SEE SHEET 1

SEE SHEET 1

SEE SHEET 1

SEE SHEET 1

SEE SHEET 1

SEE SHEET 1

SEE SHEET 1

SEE SHEET 1

SEE SHEET 1

SEE SHEET 1

SEE SHEET 1

SEE SHEET 1

SEE SHEET 1

SEE SHEET 1

SEE SHEET 1

SEE SHEET 1

SEE SHEET 1

SEE SHEET 1

SEE SHEET 1

SEE SHEET 1

SEE SHEET 1

SEE SHEET 1

SEE SHEET 1

SEE SHEET 1

SEE SHEET 1

SEE SHEET 1

SEE SHEET 1

SEE SHEET 1

SEE SHEET 1

SEE SHEET 1

SEE SHEET 1

SEE SHEET 1

SEE SHEET 1

SEE SHEET 1

SEE SHEET 1

SEE SHEET 1

SEE SHEET 1

SEE SHEET 1

SEE SHEET 1

SEE SHEET 1

SEE SHEET 1

SEE SHEET 1

SEE SHEET 1

SEE SHEET 1

SEE SHEET 1

SEE SHEET 1

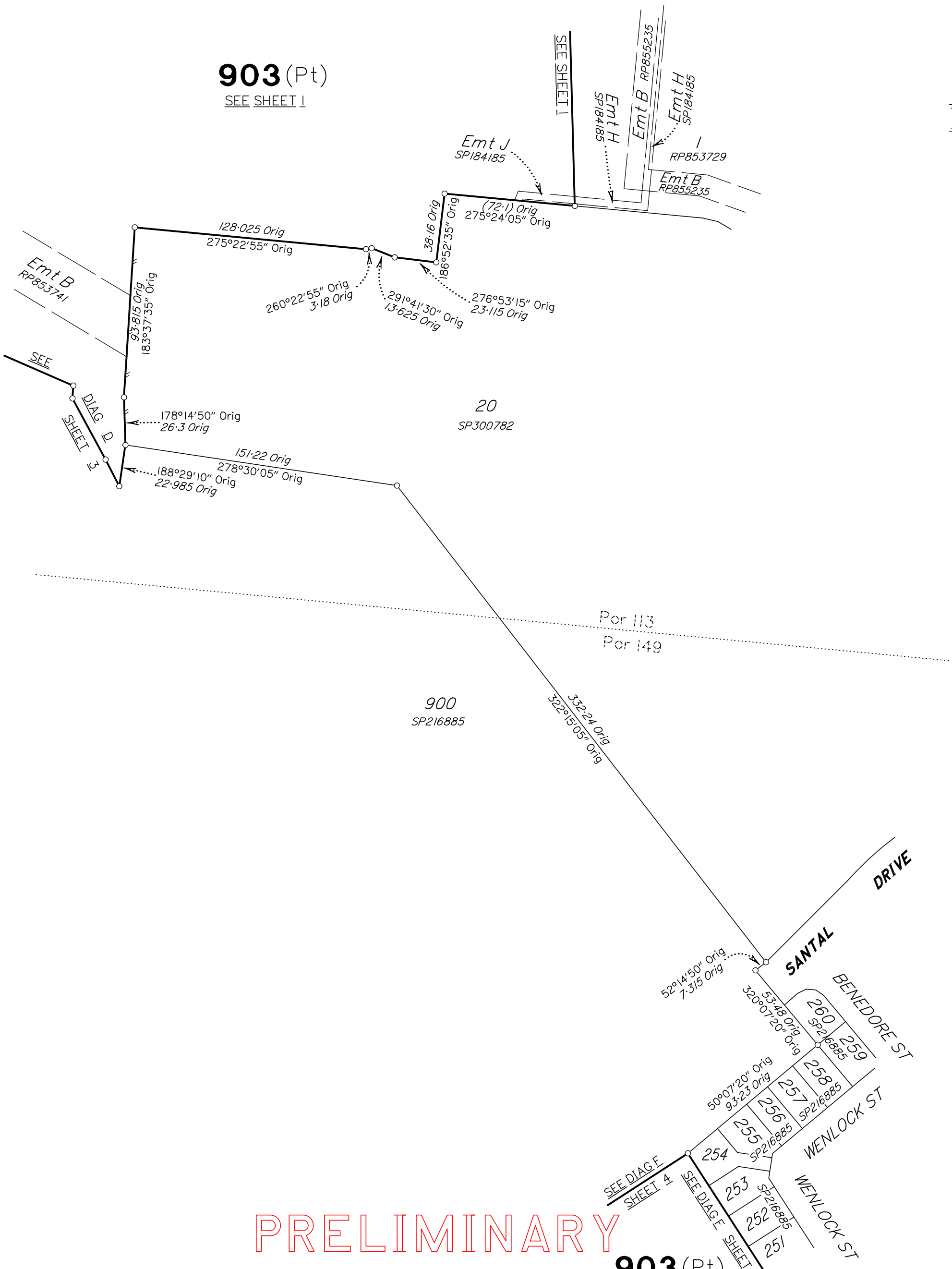
SEE SHEET 1

SEE SHEET 1

PRELIMINARY

903 (Pt)

SEE SHEET I



PRELIMINARY

DIAGRAM J
Scale 1:2000

903 (Pt)

SEE SHEET I

State copyright reserved.



Insert Plan Number **SP344615**



PRELIMINARY

PRELIMINARY

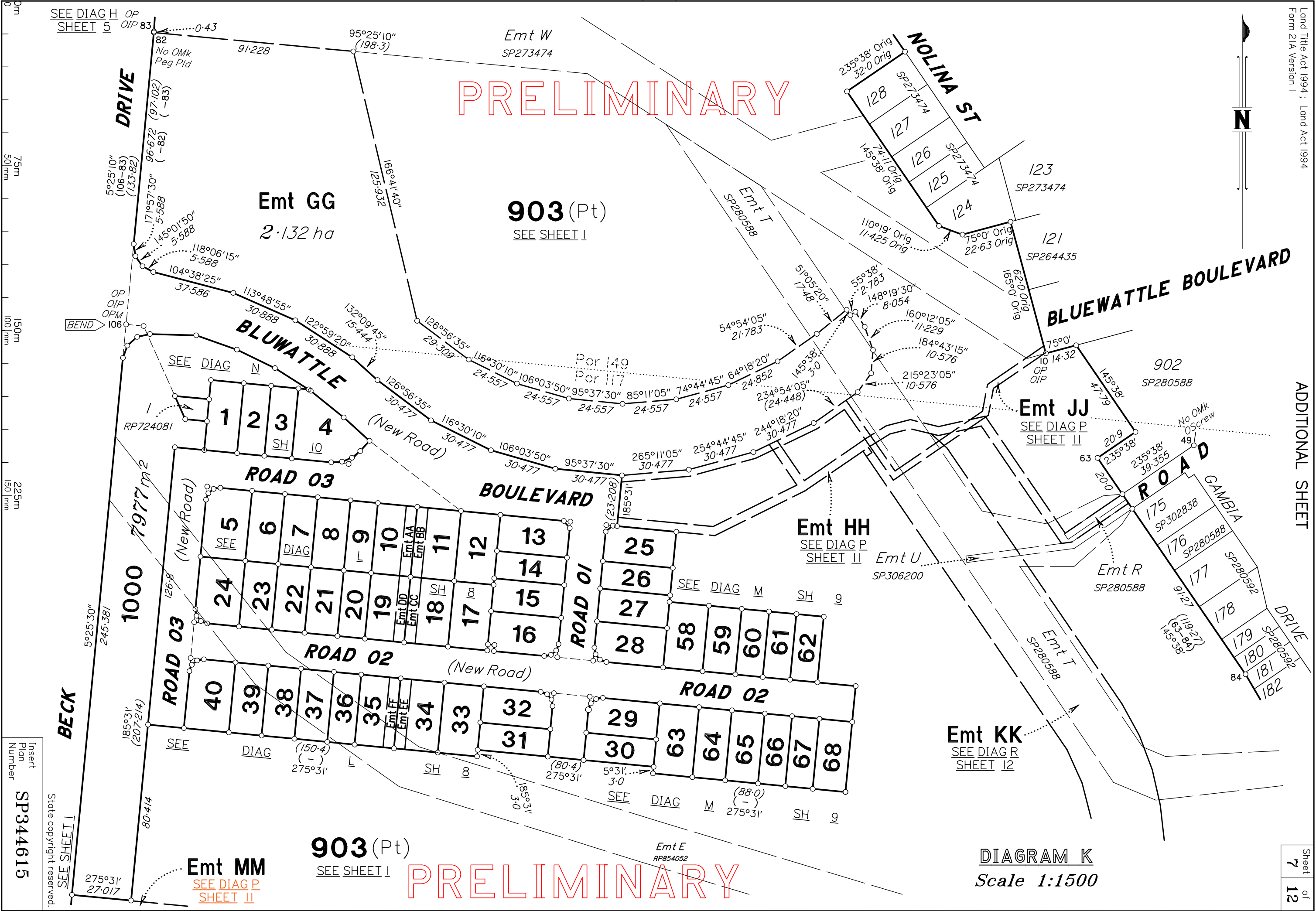


DIAGRAM K
Scale 1:1500

Insert
Plan
Number
SP344615
State copyright reserved.

0m
75m
150m
225m
501mm
1501mm

SEE DIAG H
SHEET 5

OP
OIP 83

DRIVE

Emt GG
2.132 ha

903 (Pt)
SEE SHEET I

NOLINA ST

BLUEWATTLE BOULEVARD

BLUWATTLE

Emt JJ
SEE DIAG P
SHEET II

ROAD 03

BOULEVARD

ROAD

SEE

DIAG

N

ROAD 02

(New Road)

ROAD 02

ROAD 03

SEE

DIAG

(150.4)

(-)

275°31'

Emt MM
SEE DIAG P
SHEET II

903 (Pt)
SEE SHEET I

Emt E
RP854052

Emt KK
SEE DIAG R
SHEET 12

BEND

SEE DIAG

N

Por 149

Por 117

Emt HH
SEE DIAG P
SHEET II

Emt U
SP306200

Emt R
SP280588

Emt T
SP280588

1000

(New Road)

SEE

DIAG

L

10

Emt AA

Emt BB

Emt DD

Emt CC

SH

100

19

SEE DIAG

M

SH

19

19

19

19

19

19

19

19

19

19

19

19

19

7977 m²

(New Road)

126.8

126.8

126.8

126.8

126.8

126.8

126.8

126.8

126.8

126.8

126.8

126.8

126.8

126.8

126.8

126.8

126.8

126.8

126.8

126.8

126.8

126.8

126.8

126.8

126.8

126.8

126.8

185°31'

(207.214)

185°31'

185°31'

185°31'

185°31'

185°31'

185°31'

185°31'

185°31'

185°31'

185°31'

185°31'

185°31'

185°31'

185°31'

185°31'

185°31'

185°31'

185°31'

185°31'

185°31'

185°31'

185°31'

185°31'

185°31'

185°31'

185°31'

185°31'

275°31'

27°017

275°31'

275°31'

275°31'

275°31'

275°31'

275°31'

275°31'

275°31'

275°31'

275°31'

275°31'

275°31'

275°31'

275°31'

275°31'

275°31'

275°31'

275°31'

275°31'

275°31'

275°31'

275°31'

275°31'

275°31'

275°31'

275°31'

275°31'

5°25'30"

245.381

5°25'30"

5°25'30"

5°25'30"

5°25'30"

5°25'30"

5°25'30"

5°25'30"

5°25'30"

5°25'30"

5°25'30"

5°25'30"

5°25'30"

5°25'30"

5°25'30"

5°25'30"

5°25'30"

5°25'30"

5°25'30"

5°25'30"

5°25'30"

5°25'30"

5°25'30"

5°25'30"

5°25'30"

5°25'30"

5°25'30"

5°25'30"

91-228

91-228

91-228

91-228

91-228

91-228

91-228

91-228

91-228

91-228

91-228

91-228

91-228

91-228

91-228

91-228

91-228

91-228

91-228

91-228

91-228

91-228

91-228

91-228

91-228

91-228

91-228

91-228

91-228

95°25'10"

(198.3)

95°25'10"

95°25'10"

95°25'10"

95°25'10"

95°25'10"

95°25'10"

95°25'10"

95°25'10"

95°25'10"

95°25'10"

95°25'10"

95°25'10"

95°25'10"

95°25'10"

95°25'10"

95°25'10"

95°25'10"

95°25'10"

95°25'10"

95°25'10"

95°25'10"

95°25'10"

95°25'10"

95°25'10"

95°25'10"

95°25'10"

95°25'10"

166°41'40"

125.932

166°41'40"

166°41'40"

166°41'40"

166°41'40"

166°41'40"

166°41'40"

166°41'40"

166°41'40"

166°41'40"

166°41'40"

166°41'40"

166°41'40"

166°41'40"

166°41'40"

166°41'40"

166°41'40"

166°41'40"

166°41'40"

166°41'40"

166°41'40"

166°41'40"

166°41'40"

166°41'40"

166°41'40"

166°41'40"

166°41'40"

166°41'40"

125°59'20"

30.888

125°59'20"

125°59'20"

125°59'20"

125°59'20"

125°59'20"

125°59'20"

125°59'20"

125°59'20"

125°59'20"

125°59'20"

125°59'20"

125°59'20"

125°59'20"

125°59'20"

125°59'20"

125°59'20"

125°59'20"

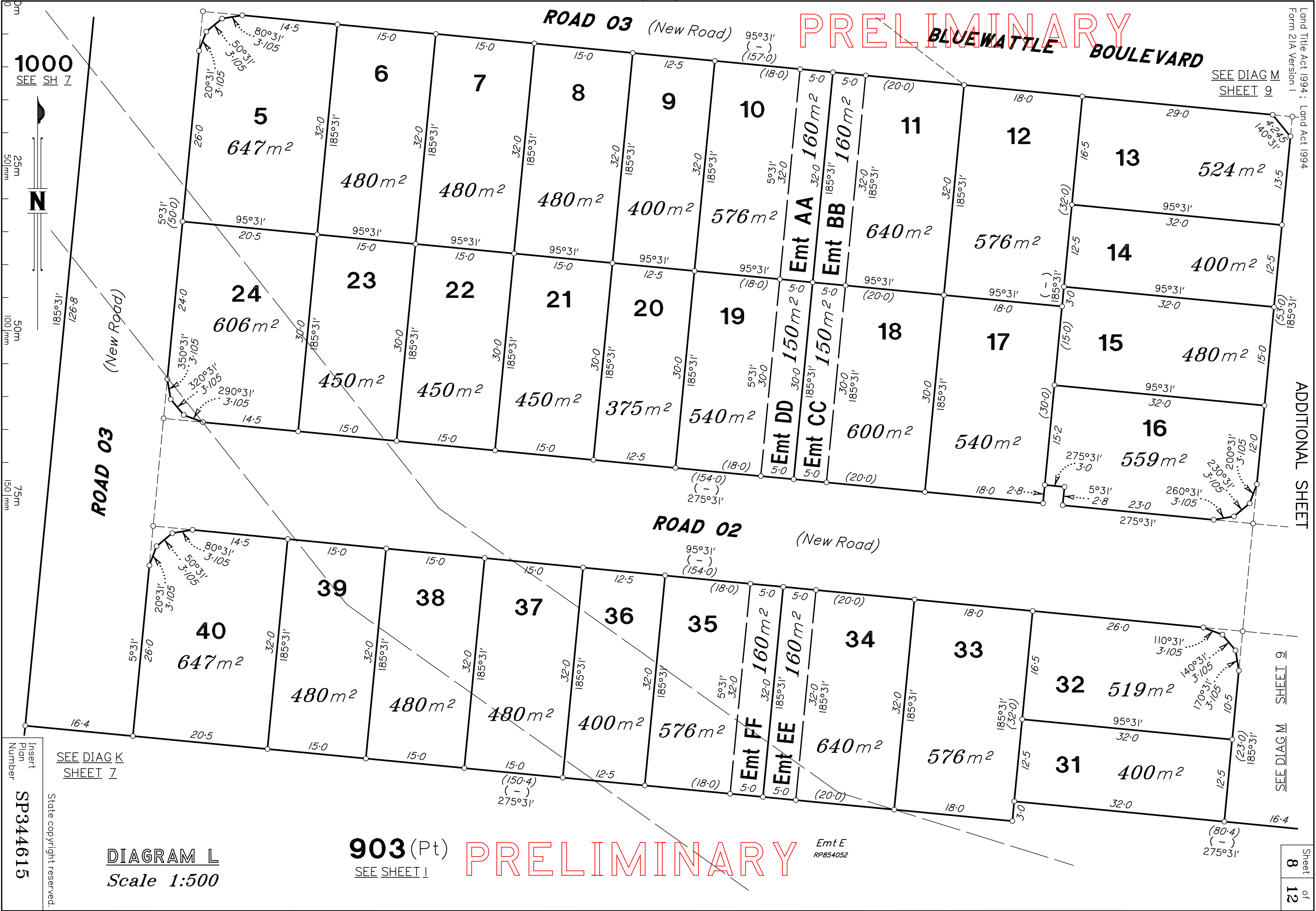
PRELIMINARY

BLUEWATTLE BOULEVARD

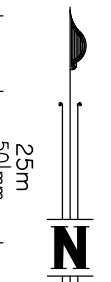
ROAD 03 (New Road)

ROAD 02 (New Road)

ROAD 03 (New Road)



1000
SEE SH 7



25m

50m

100m

50m

150m

75m

150m

75m

150m

75m

150m

75m

SEE DIAG K SHEET 7

DIAGRAM L
Scale 1:500

903 (Pt)
SEE SHEET I

PRELIMINARY

Emt E
RP854052

Insert Plan Number
SP344615

State copyright reserved.

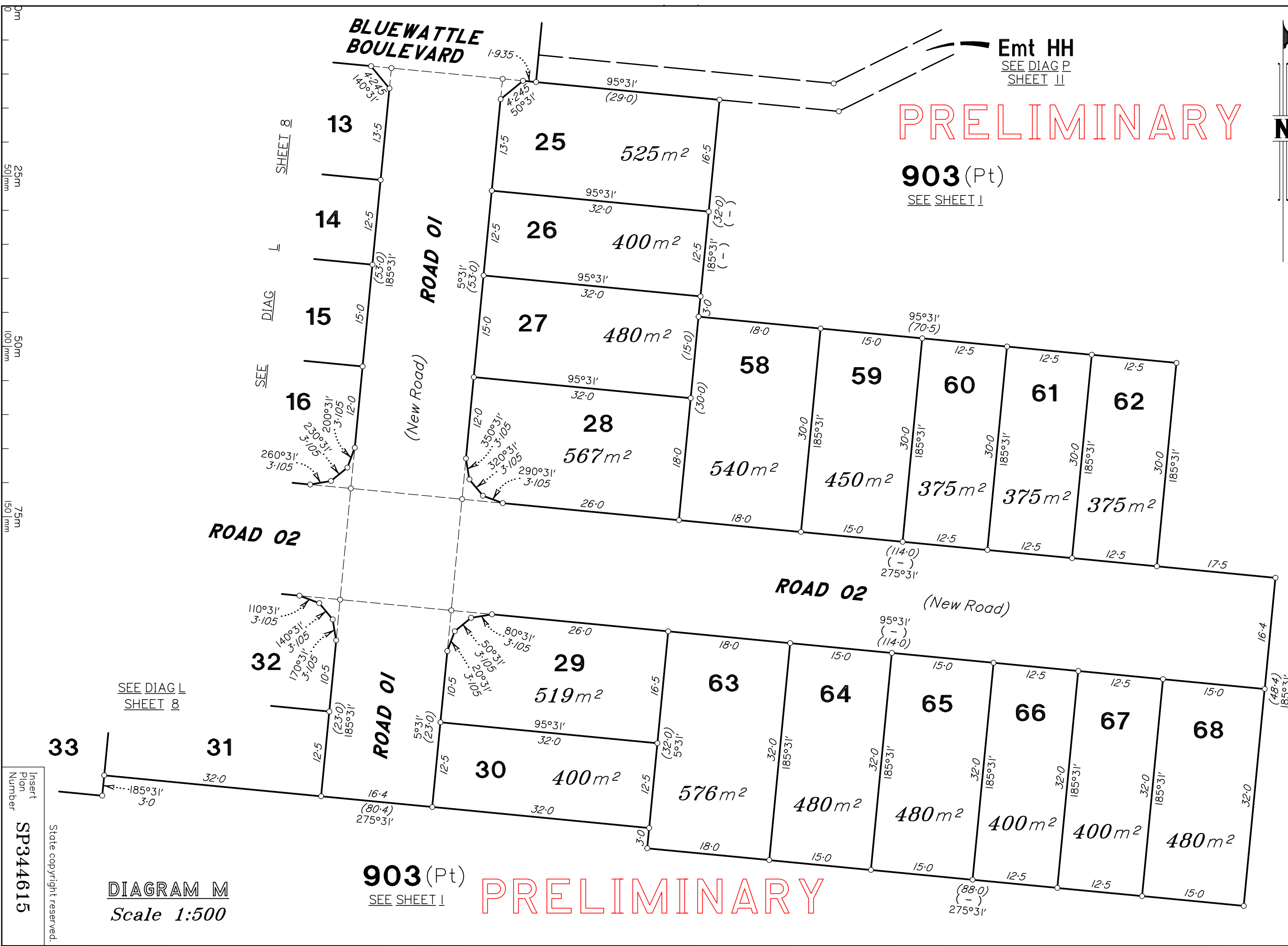


PRELIMINARY

903 (Pt)
SEE SHEET 1

903 (Pt)
SEE SHEET 1

PRELIMINARY



0m
25m
50m
75m
100mm
150mm

SHEET 8
SEE DIAG L

SEE DIAG L
SHEET 8

DIAGRAM M
Scale 1:500

State copyright reserved.

Insert
Plan
Number
SP344615



PRELIMINARY

903 (Pt)
SEE SHEET 1

Emt GG
SEE DIAG K
SHEET 7

SEE DIAG K
SHEET 7

1000
SEE SH 7

PRELIMINARY

ROAD 03
(New Road)

DRIVE

BLUEWATTLE

BOULEVARD

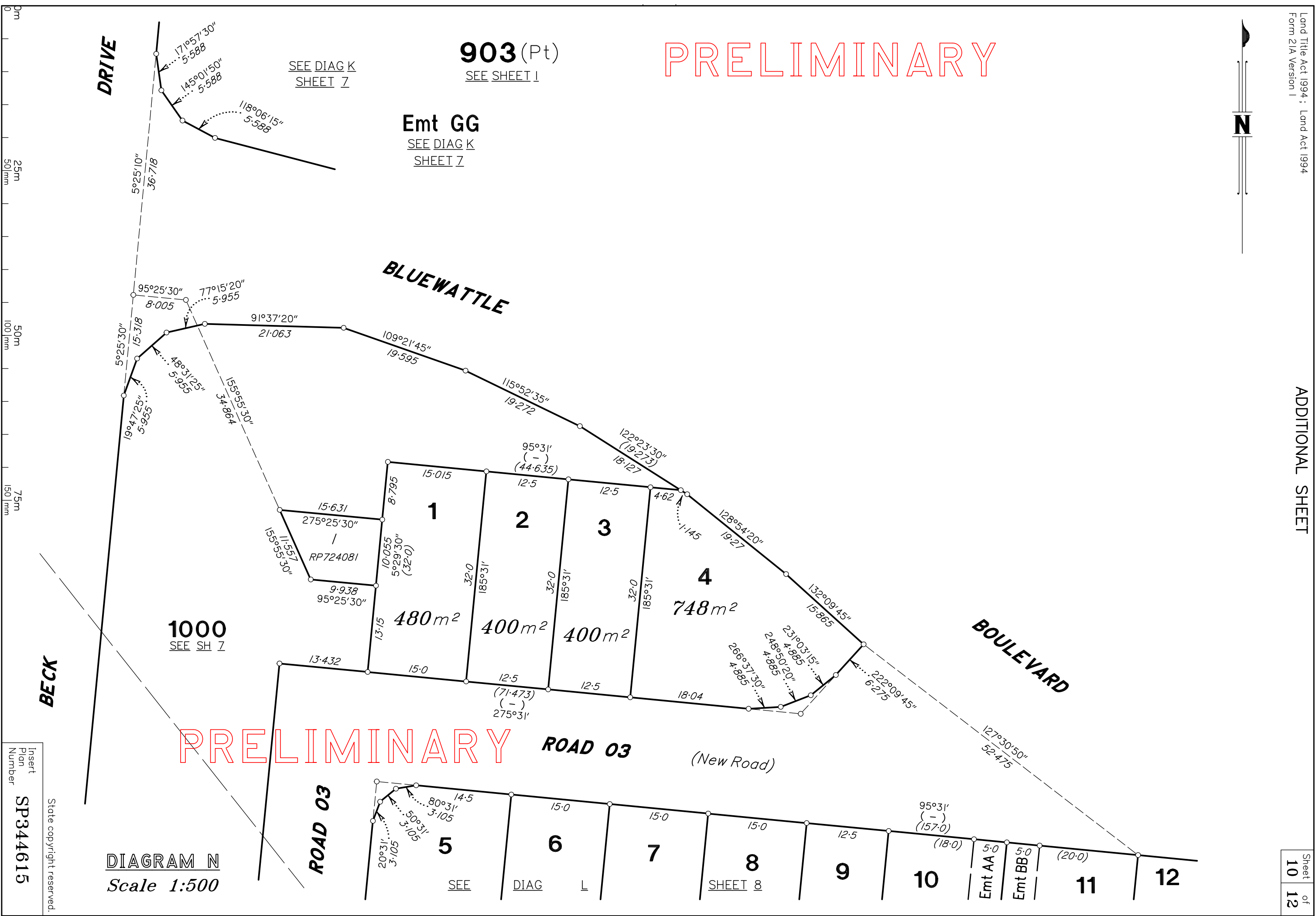
BECK

ROAD 03

DIAGRAM N
Scale 1:500

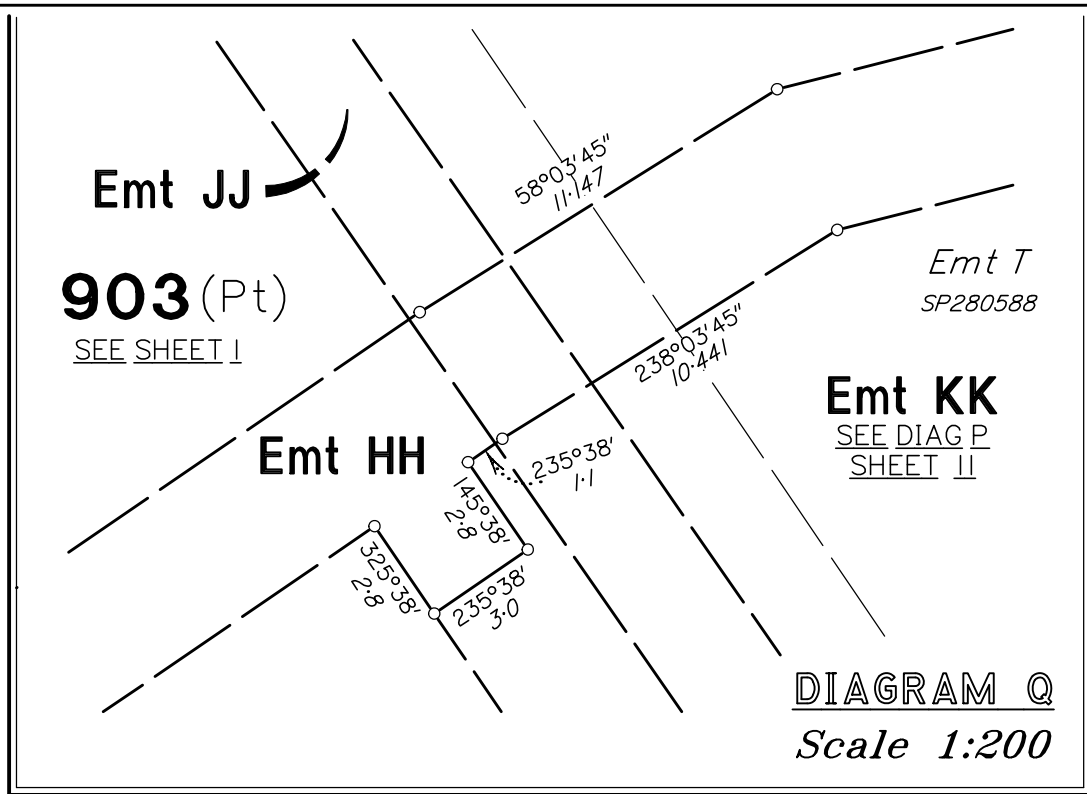
Insert
Plan
Number
SP344615

State copyright reserved.

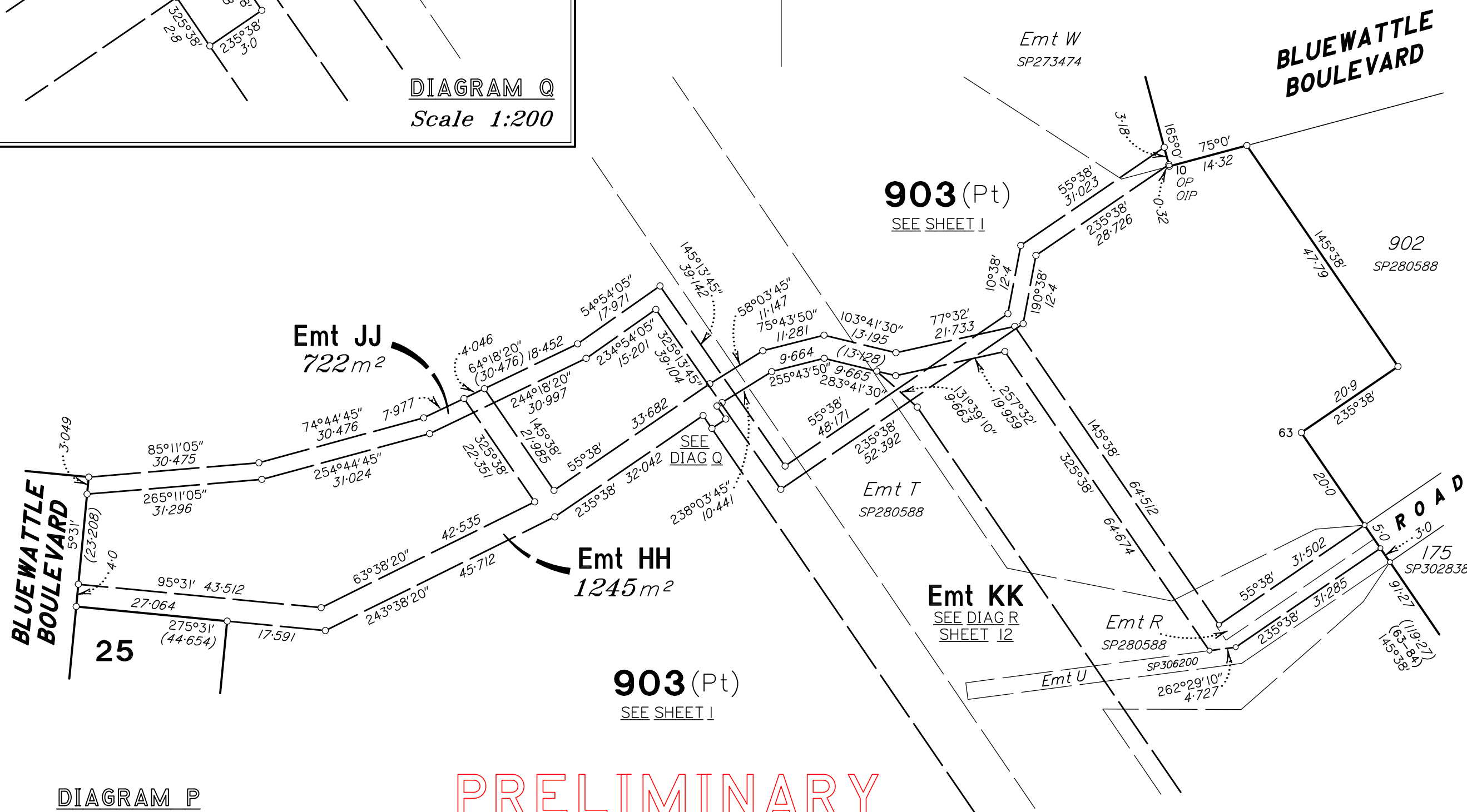


PRELIMINARY

PRELIMINARY



0m
30m
60m
90m
150mm



Insert
Plan
Number
SP344615

State copyright reserved.

PRELIMINARY

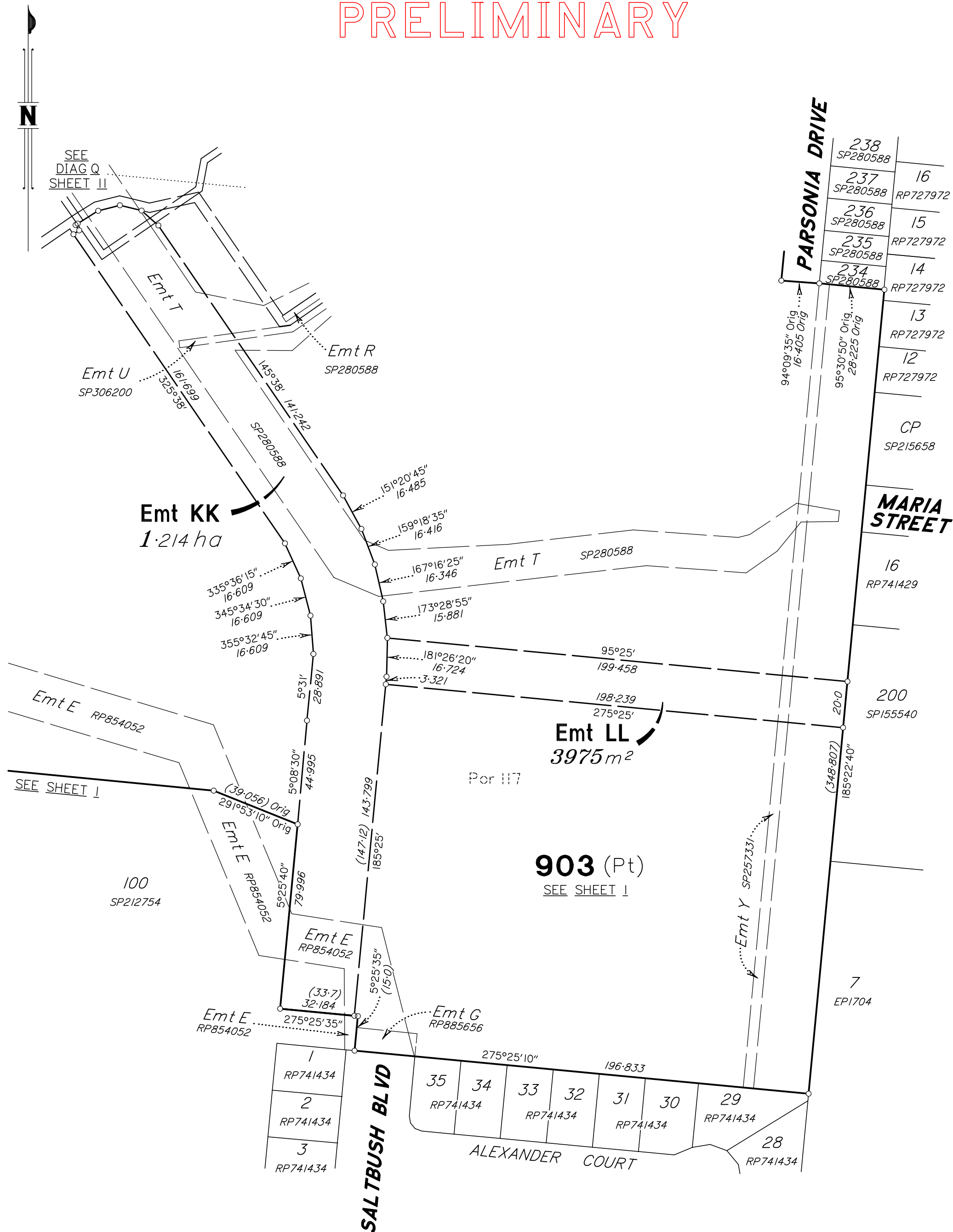


DIAGRAM R
Scale 1:1500

PRELIMINARY

State copyright reserved.



Insert Plan Number **SP344615**